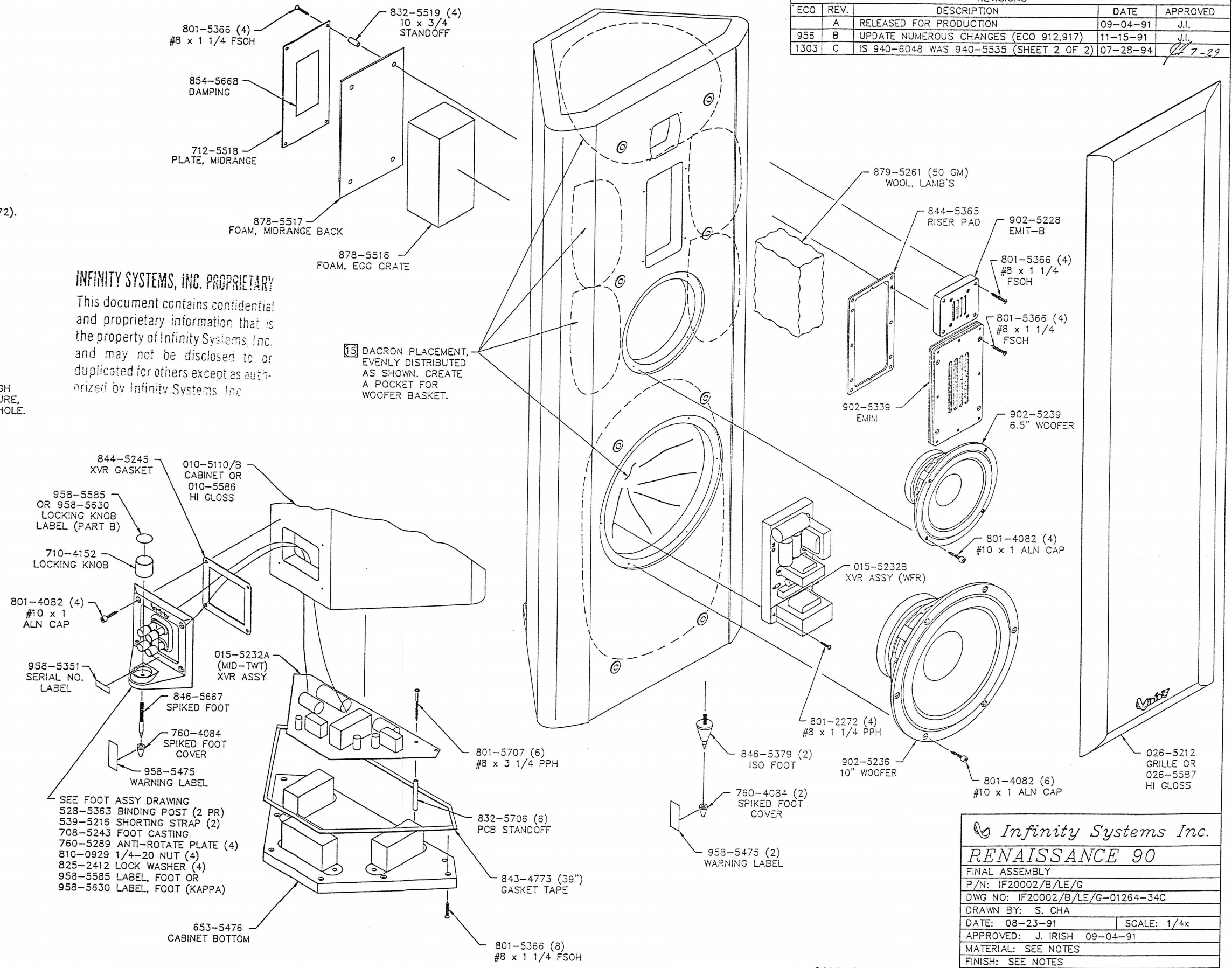


NOTES: PICTORIAL REFERENCE ONLY

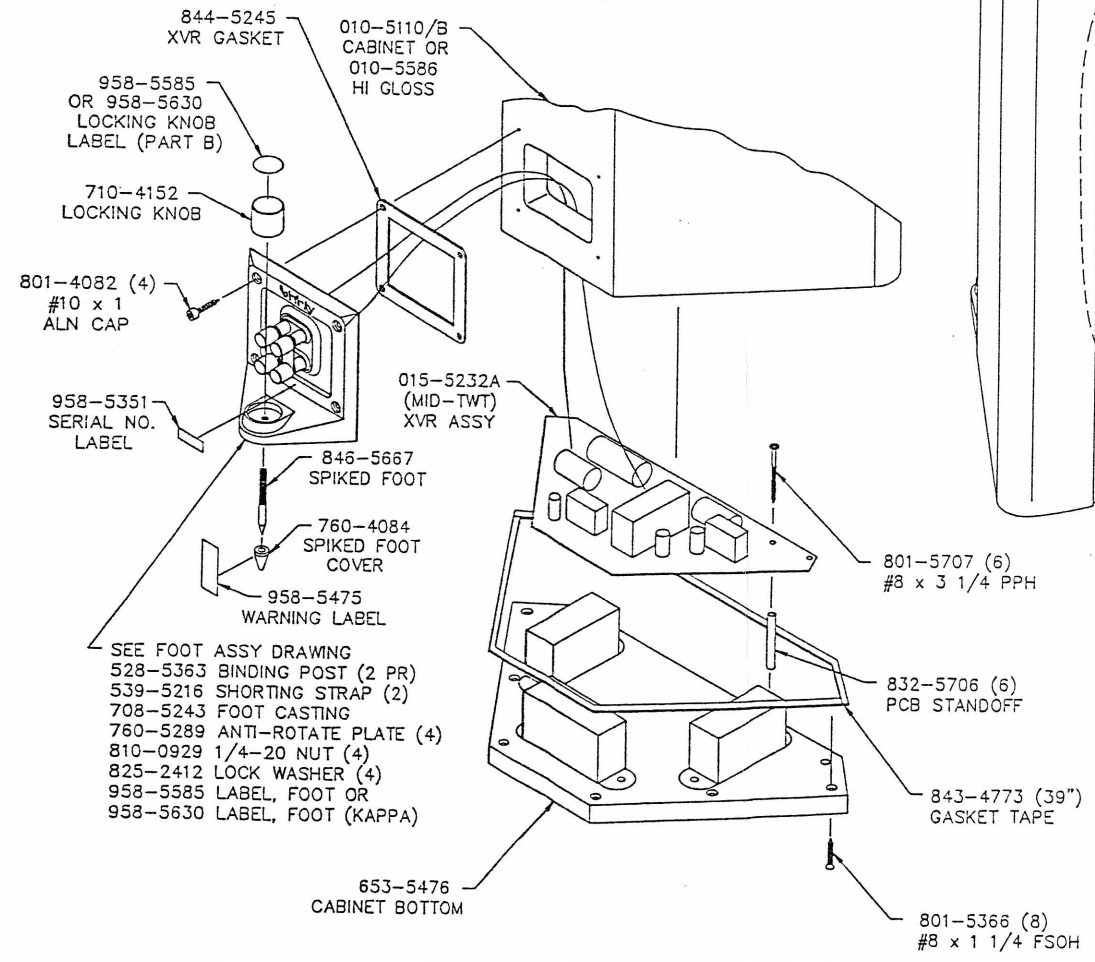
- UNSCREW TWO BOTTOM MOUNTING SCREWS AND DISCARD. REMOVE CABINET BOTTOM (653-5476 OR 653-5588) FROM CABINET (010-5110/B OR 010-5586).
- APPLY GASKET TAPE (843-4773) ALONG THE INSIDE PERIMETER OF CABINET BOTTOM.
- MOUNT MID-TWT CROSSOVER ASSEMBLY (015-5232A) WITH SIX #8x3 1/4 PPH SCREWS (#801-5707) THROUGH PCB STANDOFFS (832-5706).
- THREAD TWEETER WIRES (BLU, BLU/BLK) THROUGH CABINET AND OUT TWEETER HOLE.
- THREAD MIDRANGE WIRES (WHT, WHT/BLK) THROUGH HOLE IN BOTTOM OF MIDRANGE ENCLOSURE AND OUT MIDRANGE HOLE.
- THREAD MID-BASS WIRES (YEL, YEL/BLK) THROUGH HOLE IN BOTTOM OF MID-BASS ENCLOSURE AND OUT THROUGH CUTOUT.
- THREAD MID/TWT/MID-BASS INPUT WIRES (YEL, YEL/BLK) THROUGH HOLE IN REAR OF CABINET. ENCLOSURE AND OUT THROUGH CUTOUT.
- MOUNT CABINET BOTTOM WITH EIGHT #8 x 1 1/4 FSOH (801-5366).
- MOUNT WOOFER CROSSOVER ASSEMBLY (015-5232B) TO BACK OF CABINET THROUGH WOOFER HOLE USING FOUR #8 x 1 1/4 PPH (801-2272).
- MOUNT CROSSOVER BOARD WITH CHAMFERED CORNERS DOWN.
- THREAD WOOFER WIRES (RED, BLK, (2) RED/BLK) THROUGH CABINET AND OUT WOOFER HOLE. THREAD WOOFER INPUT WIRES (RED, RED/BLK) THROUGH HOLE IN REAR OF CABINET.
- THREAD MID/TWT/MID-BASS AND WOOFER INPUT WIRES THROUGH CROSSOVER GASKET (844-5245).
- USING ERSIN SN63 SOLDER (858-3097), SOLDER WOOFER INPUT WIRES TO LOWER SET OF BINDING POST. RED/BLK (NEGATIVE -) WIRE TO THE BLACK BINDING POST, RED (POSITIVE +) WIRE TO THE RED BINDING POST. USE CARE NOT TO OVER HEAT BINDING POSTS.
- REPEAT STEP 12 FOR THE MID/TWT/MID-BASS INPUT WIRES (YEL TO POSITIVE +, YEL/BLK TO NEGATIVE -) TO THE UPPER SET OF BINDING POSTS.
- MOUNT FOOT ASSEMBLY WITH GASKET TO THE REAR OF CABINET WITH FOUR #10 x 1 ALN CAP (801-4082).
- EVENLY FILL CABINET WITH DACRON (875-1121) 490 GM.: 55 GM. THROUGH TWEETER HOLE, 20 GM. EACH SIDE OF MIDRANGE AND MID-BASS ENCLOSURE, 175 GM. THROUGH MID-BASS WOOFER HOLE, 180 GM. THROUGH WOOFER HOLE.
- CONNECT WOOFER (902-5236) AS INDICATED. VC1: RED .250 CLIP TO POSITIVE, RED/BLACK .205 CLIP TO NEGATIVE. VC2: BLACK .250 CLIP TO POSITIVE, RED/BLACK .205 CLIP TO NEGATIVE. SOLDER CONNECTIONS WITH ERSIN SN63 SOLDER.
- MOUNT WOOFER USING SIX #10 x 1 ALN CAP (801-4082).
- USING HOTMELT (855-0747) SEAL MIDRANGE AND MID-BASS WIRE HOLE ON THE INSIDE OF THE MIDRANGE ENCLOSURE.
- ATTACH EMIM RISER PAD (844-5365) TO REAR OF EMIM (902-5339). CONNECT EMIM AS INDICATED, WHITE .205 CLIP TO POSITIVE, WHITE/BLACK .110 CLIP TO NEGATIVE. SOLDER CONNECTIONS WITH ERSIN SN63 SOLDER.
- MOUNT EMIM USING FOUR #8 x 1 1/4 FSOH (801-5366).
- CONNECT EMIT-B (902-5228) AS INDICATED, BLUE .205 CLIP TO POSITIVE, YELLOW/BLACK .205 CLIP TO NEGATIVE.
- MOUNT MID-BASS USING FOUR #10 x 1 ALN CAP (801-4082).
- INSERT 50 GM. FLUFFED LAMB'S WOOL (879-5261) INTO MIDRANGE ENCLOSURE FROM REAR.
- INSERT EGG CRATE FOAM (878-5516) INTO MIDRANGE ENCLOSURE WITH BUMPS FACING INWARD.
- INSERT FOUR #10 x 3/4 STANDOFFS (832-5519) INTO HOLES IN BACK MIDRANGE FOAM (878-5517). ATTACH DAMPING (854-5668) TO MIDRANGE PLATE (712-5518) AND MOUNT TO REAR OF CABINET WITH FOUR #8 x 1 1/4 FSOH (801-5366).
- MOUNT GRILLE (026-5212 OR 026-5587) TO CABINET AND PRESS DRIVER GASKET DOWN ONTO THE EMIT AND EMIM. INSERT GRILLE INSTRUCTION SHEET (930-5521) BETWEEN GRILLE AND CABINET (SEE SHEET 2 OF 2).
- SCREW TWO ISO FEET (846-5379) INTO INSERTS IN BOTTOM OF CABINET.
- PLACE LOCKING KNOB LABEL (958-5585 OR 958-5630) PART B ONTO TOP OF LOCKING KNOB (710-4152).
- PLACE LOCKING KNOB IN POSITION AND SCREW SPIKED FOOT (846-5667) THROUGH FOOT ASSEMBLY INTO KNOB.
- ADJUST SPIKE SO CABINET STANDS LEVEL. TIGHTEN KNOB.
- ATTACH THREE SPIKED FOOT COVERS (760-4084) AND THREE WARNING LABELS (958-5475).

REVISIONS				
ECO	REV.	DESCRIPTION	DATE	APPROVED
	A	RELEASED FOR PRODUCTION	09-04-91	J.I.
956	B	UPDATE NUMEROUS CHANGES (ECO 912,917)	11-15-91	J.I.
1303	C	IS 940-6048 WAS 940-5535 (SHEET 2 OF 2)	07-28-94	J.I.



INFINITY SYSTEMS, INC. PROPRIETARY
 This document contains confidential and proprietary information that is the property of Infinity Systems, Inc. and may not be disclosed to or duplicated for others except as authorized by Infinity Systems, Inc.

15 DACRON PLACEMENT, EVENLY DISTRIBUTED AS SHOWN. CREATE A POCKET FOR WOOFER BASKET.



AUG 02 1994

Infinity Systems Inc.	
RENAISSANCE 90	
FINAL ASSEMBLY	
P/N: IF20002/B/LE/G	
DWG NO: IF20002/B/LE/G-01264-3+C	
DRAWN BY: S. CHA	
DATE: 08-23-91	SCALE: 1/4x
APPROVED: J. IRISH 09-04-91	
MATERIAL: SEE NOTES	
FINISH: SEE NOTES	
TOLERANCES: ANG: ± = .5° FRACT. ± = 1/32	
DECIMALS: .XX ± = .01 .XXX ± = .005	
REVISION : C	SHEET 1 OF 2